

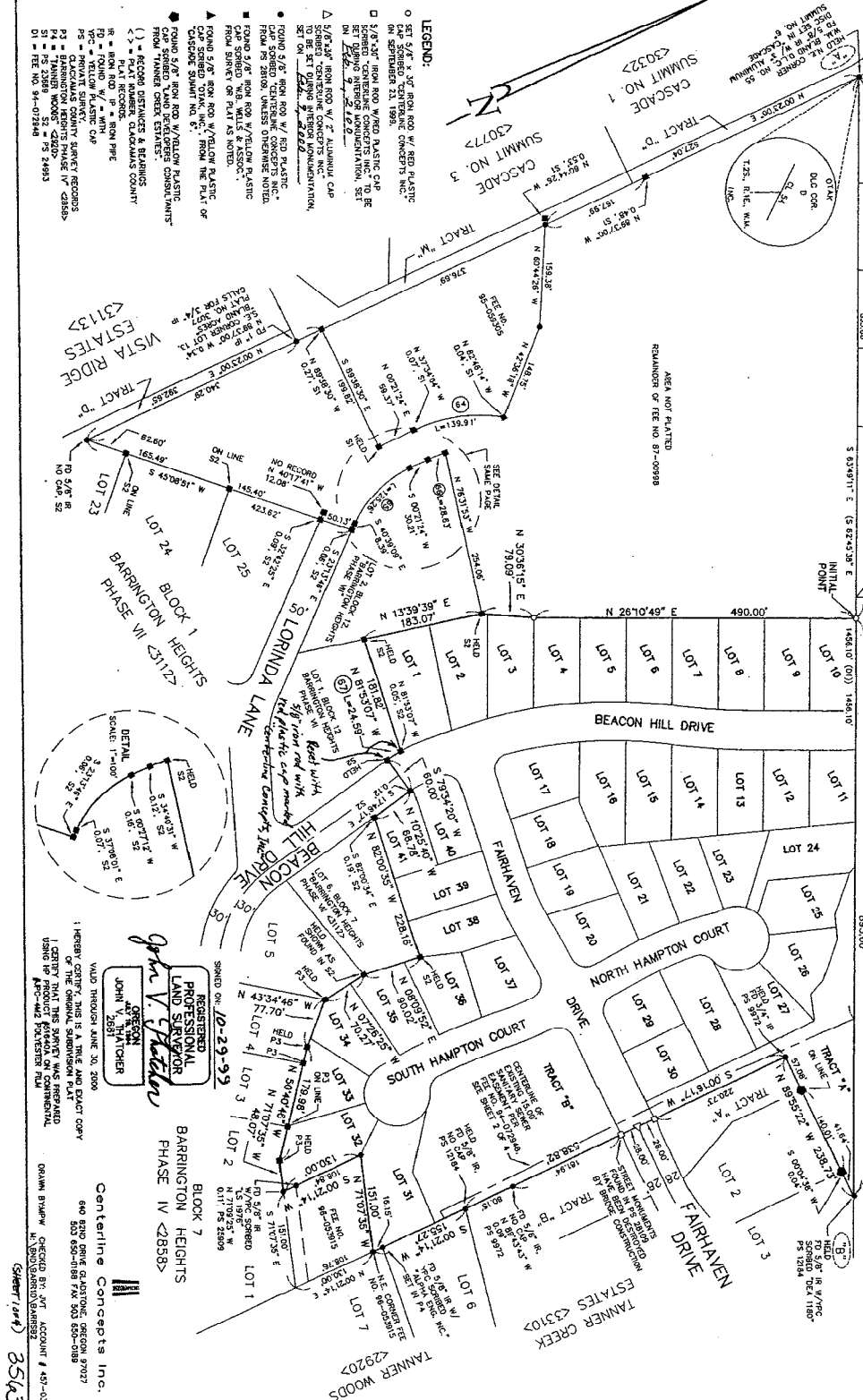
SHEET INDEX
 SHEET 1 - SHEET INDEX OVERALL SITE MAP
 SHEET 2 - LOTS 1 TO 41
 SHEET 3 - CURVE DATA, DETAILS
 SHEET 4 - APPROVALS, SURVEYORS CERTIFICATE, ACKNOWLEDGMENT, CONSENT AFFIDAVITS, MARKANTS

LOT 1
 RE: NO. 81-1695
 BASIS OF BEARING
 175.868° (S 72°58' 17.78") E
 1728.86'

CLENESEK
 < 5 8 4 >

PLAT BOOK 114 PAGE 25
**BARRINGTON HEIGHTS
 NORTH**

LOCATED IN THE
 N.W. 1/4 SECTION 36, T.25, R.1E, W.M.,
 CITY OF WEST LINN, CLATSOP COUNTY, OREGON
 SEPTEMBER 23, 1999 SCALE 1"=100'
 PLANNING FILE NO. SUB 97-09/20-97-07/MSC-97-08
 SHEET 1 OF 4



LEGEND:
 ○ 5/8" X 3/4" IRON ROD W/ RED PLASTIC CAP SIGNED 'CENTURIE CONCEPTS INC.' ON SEPTEMBER 21, 1999.
 □ 5/8" X 3/4" IRON ROD W/ RED PLASTIC CAP BEARING 'CENTURIE CONCEPTS INC.' AND '9-23-99' ON THE PLAT AS NOTED.
 △ 5/8" X 3/4" IRON ROD W/ 2" ALUMINUM CAP SIGNED 'CENTURIE CONCEPTS INC.' AND '9-23-99' ON THE PLAT AS NOTED.
 ● FOUND 5/8" IRON ROD W/ RED PLASTIC CAP SIGNED 'CENTURIE CONCEPTS INC.' FROM PG 2809, UNLESS OTHERWISE NOTED.
 ■ FOUND 5/8" IRON ROD W/ YELLOW PLASTIC CAP SIGNED 'CENTURIE CONCEPTS INC.' FROM THE PLAT OF 'CASCADIA SUMMIT NO. 6'.

RECORDED DISTANCES & BEARINGS
 (>) = PLAT NUMBER CLATSOP COUNTY
 () = PLAT NUMBER CLATSOP COUNTY
 H = IRON ROD
 W = YELLOW PLASTIC CAP
 FPC = YELLOW PLASTIC CAP
 F3 = CLATSOP COUNTY SURVEY RECORDS
 F2 = CLATSOP COUNTY SURVEY RECORDS
 F1 = HS 2058 = S2 = NS 24933
 D1 = REE NO. 94-07248

1 HEREBY CERTIFY THAT I AM A LICENSED SURVEYOR IN THE STATE OF OREGON.
 I CERTIFY THAT THIS SURVEY WAS PREPARED USING THE PRODUCT KOKOA ON CONVENTIONAL 840-2-1/2 INCHES TALL.

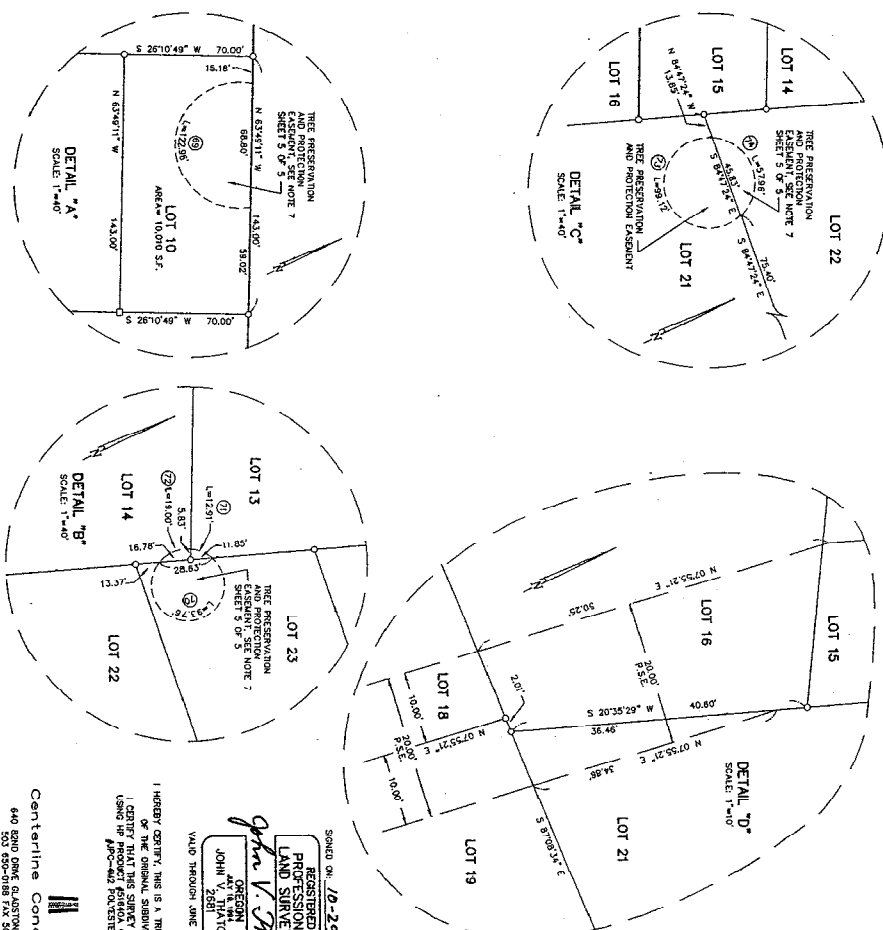
REGISTERED PROFESSIONAL LAND SURVEYOR
 JOHN V. THATCHER
 OPRA V. STEWART
 BARRINGTON HEIGHTS PHASE IV <858>
 CENTERLINE CONCEPTS INC.
 640 630 DRIVE GASTON, OREGON 97027
 503 650-0181 FAX 503 650-0188
 CHECKED BY: JAT ACCOUNT # 491-03
 M. D. W. GARDNER/DAMRESZ
 35643

CURVE DATA:

CURVE	NUMBER	LENGTH	CHORD	BEARING	DELTA
1	42.21	84.42	84.42	S 87°21'18" E	107°04'12"
2	42.21	84.42	84.42	S 87°21'18" E	107°04'12"
3	42.21	84.42	84.42	S 87°21'18" E	107°04'12"
4	42.21	84.42	84.42	S 87°21'18" E	107°04'12"
5	42.21	84.42	84.42	S 87°21'18" E	107°04'12"
6	42.21	84.42	84.42	S 87°21'18" E	107°04'12"
7	42.21	84.42	84.42	S 87°21'18" E	107°04'12"
8	42.21	84.42	84.42	S 87°21'18" E	107°04'12"
9	42.21	84.42	84.42	S 87°21'18" E	107°04'12"
10	42.21	84.42	84.42	S 87°21'18" E	107°04'12"
11	42.21	84.42	84.42	S 87°21'18" E	107°04'12"
12	42.21	84.42	84.42	S 87°21'18" E	107°04'12"
13	42.21	84.42	84.42	S 87°21'18" E	107°04'12"
14	42.21	84.42	84.42	S 87°21'18" E	107°04'12"
15	42.21	84.42	84.42	S 87°21'18" E	107°04'12"
16	42.21	84.42	84.42	S 87°21'18" E	107°04'12"
17	42.21	84.42	84.42	S 87°21'18" E	107°04'12"
18	42.21	84.42	84.42	S 87°21'18" E	107°04'12"
19	42.21	84.42	84.42	S 87°21'18" E	107°04'12"
20	42.21	84.42	84.42	S 87°21'18" E	107°04'12"
21	42.21	84.42	84.42	S 87°21'18" E	107°04'12"
22	42.21	84.42	84.42	S 87°21'18" E	107°04'12"
23	42.21	84.42	84.42	S 87°21'18" E	107°04'12"
24	42.21	84.42	84.42	S 87°21'18" E	107°04'12"
25	42.21	84.42	84.42	S 87°21'18" E	107°04'12"
26	42.21	84.42	84.42	S 87°21'18" E	107°04'12"
27	42.21	84.42	84.42	S 87°21'18" E	107°04'12"
28	42.21	84.42	84.42	S 87°21'18" E	107°04'12"
29	42.21	84.42	84.42	S 87°21'18" E	107°04'12"
30	42.21	84.42	84.42	S 87°21'18" E	107°04'12"
31	42.21	84.42	84.42	S 87°21'18" E	107°04'12"
32	42.21	84.42	84.42	S 87°21'18" E	107°04'12"
33	42.21	84.42	84.42	S 87°21'18" E	107°04'12"
34	42.21	84.42	84.42	S 87°21'18" E	107°04'12"
35	42.21	84.42	84.42	S 87°21'18" E	107°04'12"
36	42.21	84.42	84.42	S 87°21'18" E	107°04'12"
37	42.21	84.42	84.42	S 87°21'18" E	107°04'12"
38	42.21	84.42	84.42	S 87°21'18" E	107°04'12"
39	42.21	84.42	84.42	S 87°21'18" E	107°04'12"
40	42.21	84.42	84.42	S 87°21'18" E	107°04'12"
41	42.21	84.42	84.42	S 87°21'18" E	107°04'12"
42	42.21	84.42	84.42	S 87°21'18" E	107°04'12"
43	42.21	84.42	84.42	S 87°21'18" E	107°04'12"
44	42.21	84.42	84.42	S 87°21'18" E	107°04'12"
45	42.21	84.42	84.42	S 87°21'18" E	107°04'12"
46	42.21	84.42	84.42	S 87°21'18" E	107°04'12"
47	42.21	84.42	84.42	S 87°21'18" E	107°04'12"
48	42.21	84.42	84.42	S 87°21'18" E	107°04'12"
49	42.21	84.42	84.42	S 87°21'18" E	107°04'12"
50	42.21	84.42	84.42	S 87°21'18" E	107°04'12"
51	42.21	84.42	84.42	S 87°21'18" E	107°04'12"
52	42.21	84.42	84.42	S 87°21'18" E	107°04'12"
53	42.21	84.42	84.42	S 87°21'18" E	107°04'12"
54	42.21	84.42	84.42	S 87°21'18" E	107°04'12"
55	42.21	84.42	84.42	S 87°21'18" E	107°04'12"
56	42.21	84.42	84.42	S 87°21'18" E	107°04'12"
57	42.21	84.42	84.42	S 87°21'18" E	107°04'12"
58	42.21	84.42	84.42	S 87°21'18" E	107°04'12"
59	42.21	84.42	84.42	S 87°21'18" E	107°04'12"
60	42.21	84.42	84.42	S 87°21'18" E	107°04'12"
61	42.21	84.42	84.42	S 87°21'18" E	107°04'12"
62	42.21	84.42	84.42	S 87°21'18" E	107°04'12"
63	42.21	84.42	84.42	S 87°21'18" E	107°04'12"
64	42.21	84.42	84.42	S 87°21'18" E	107°04'12"
65	42.21	84.42	84.42	S 87°21'18" E	107°04'12"
66	42.21	84.42	84.42	S 87°21'18" E	107°04'12"
67	42.21	84.42	84.42	S 87°21'18" E	107°04'12"
68	42.21	84.42	84.42	S 87°21'18" E	107°04'12"
69	42.21	84.42	84.42	S 87°21'18" E	107°04'12"
70	42.21	84.42	84.42	S 87°21'18" E	107°04'12"
71	42.21	84.42	84.42	S 87°21'18" E	107°04'12"
72	42.21	84.42	84.42	S 87°21'18" E	107°04'12"
73	42.21	84.42	84.42	S 87°21'18" E	107°04'12"
74	42.21	84.42	84.42	S 87°21'18" E	107°04'12"
75	42.21	84.42	84.42	S 87°21'18" E	107°04'12"
76	42.21	84.42	84.42	S 87°21'18" E	107°04'12"
77	42.21	84.42	84.42	S 87°21'18" E	107°04'12"
78	42.21	84.42	84.42	S 87°21'18" E	107°04'12"
79	42.21	84.42	84.42	S 87°21'18" E	107°04'12"
80	42.21	84.42	84.42	S 87°21'18" E	107°04'12"

PLAT BOOK 112, PAGE 25
BARRINGTON HEIGHTS NORTH

LOCATED IN THE
 N.W. 1/4 SECTION 36, T.2S, R.1E, W.M.,
 CITY OF WEST LINN, CLACKAMAS COUNTY, OREGON
 SEPTEMBER 23, 1999
 PLANNING FILE NO. SUB 97-08/2C-97-07/MSC-97-08
 SHEET 3 OF 4



Centerline Concepts Inc.
 640 82ND OREGON BLVD. OREGON 97027
 503 630-0188 FAX 503 630-0189

REGISTERED
 LAND SURVEYOR
 JOHN V. STOKER
 OREGON
 JOHN V. STOKER
 2581
 VALID THROUGH JUNE 30, 2009

ORDER NO. 12-29-99

I HEREBY CERTIFY, THIS IS A TRUE AND EXACT COPY
 OF THE ORIGINAL SUBMISSION PLAT
 I CERTIFY THAT THIS SURVEY WAS PREPARED
 USING THE PROPER SURVEYING METHODS AND
 APPROVED EXISTING PLANS

CHECKED BY: JNT ACCOUNT # 457-03
 35143

