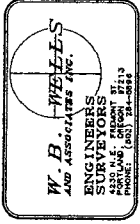


# BARRINGTON HEIGHTS

## PHASE IV

SITUATED IN THE WEST 1/2 OF SECTION 36, TOWNSHIP 2 SOUTH, RANGE 1 EAST OF THE WILLAMETTE MERIDIAN, CLATSOP COUNTY OF CLATSOP, OREGON, MAY, 1989



I HEREBY CERTIFY THAT THIS IS TRUE AND EXACT COPY OF THE ORIGINAL PLAN.

*David W. Mills*

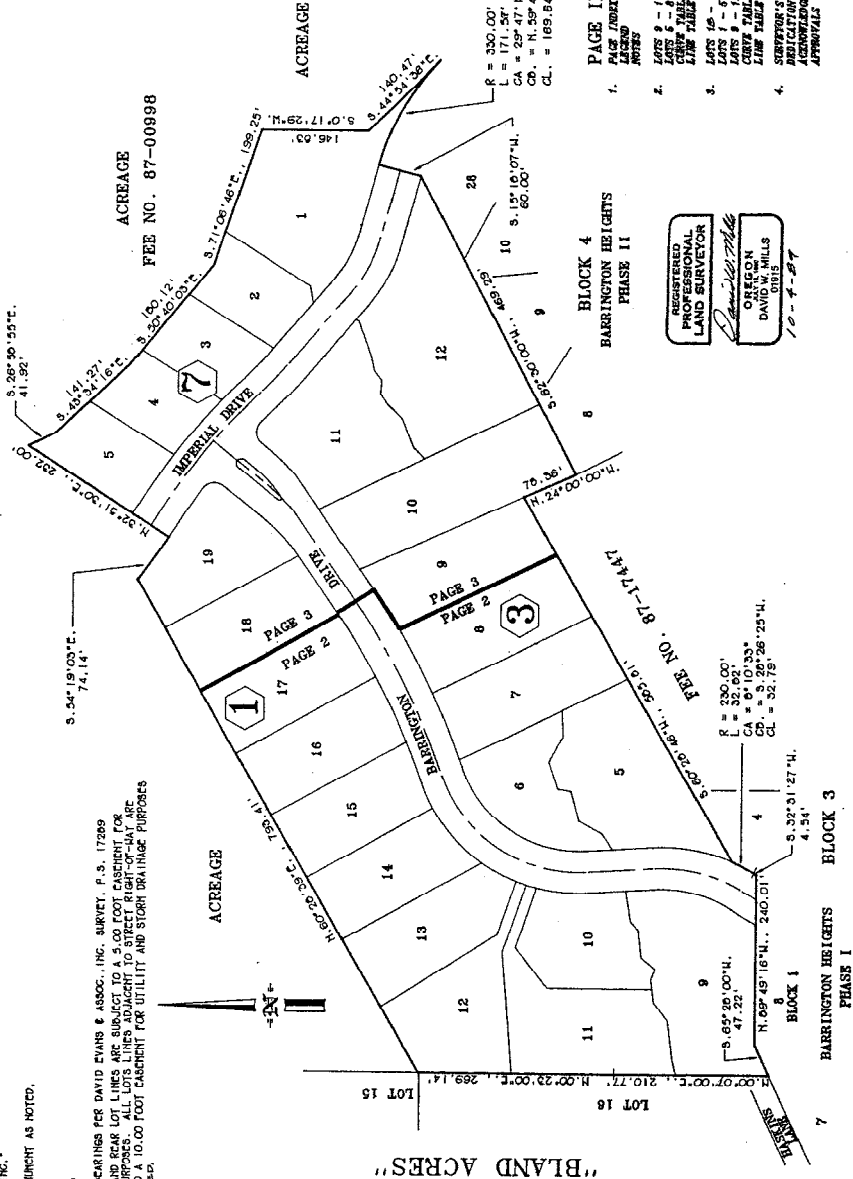
69-35

### LEGEND

- INITIAL POINT - PLACED A 6" X 6" X 24" CONCRETE WITH A 3/8" X 30" IRON ROD WITH A YELLOW PLASTIC CAP STAMPED "H.D. WELLS & ASSOC., INC. AT THE BASE OF A TREE, 6" BELOW THE SURFACE OF THE GROUND.
- SET 3/8" X 30" IRON ROD WITH YELLOW PLASTIC CAP STAMPED "H.D. WELLS & ASSOC., INC.
- FOUND MONUMENT AS NOTED.

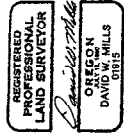
### NOTES

1. BASIS OF BEARINGS FOR DAVID EVANS & ASSOC., INC. SURVEY, P.S. 17289
2. ALL SIDE AND REAR LOT LINES ARE SUBJECT TO A 5.00 FOOT EASEMENT FOR UTILITY AND STORM DRAINAGE PURPOSES SUBJECT TO A 10.00 FOOT EASEMENT FOR UTILITY AND STORM DRAINAGE PURPOSES. THIS IS NOTED.



### PAGE INDEX

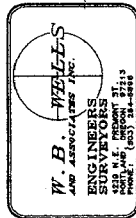
1. PAGE INDEX
2. LOTS 1 - 17, BLOCK 1
3. LOTS 18 - 28, BLOCK 1
4. LOTS 1 - 4, BLOCK 2
5. LOTS 5 - 10, BLOCK 3
6. LOTS 11 - 17, BLOCK 4
7. LOTS 18 - 28, BLOCK 4
8. SURVEYOR'S CERTIFICATE
9. ACKNOWLEDGMENT
10. APPROVALS



93/10

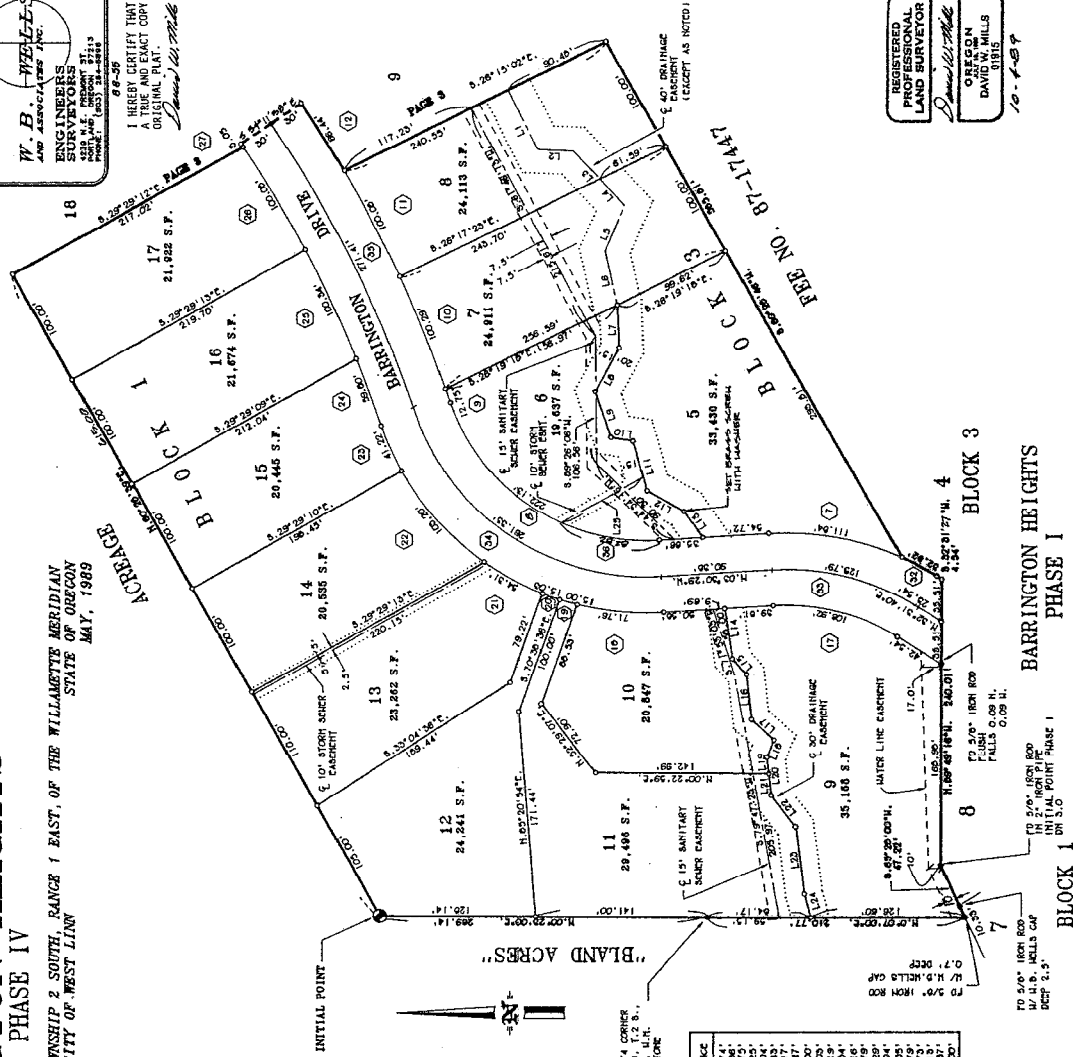
# BARRINGTON HEIGHTS PHASE IV

SITUATED IN THE WEST 1/2 OF SECTION 36, TOWNSHIP 2 SOUTH, RANGE 1 EAST, OF THE WILLAMETTE MERIDIAN  
COUNTY OF CLATSOP  
SCALE 1" = 60'



I HEREBY CERTIFY THAT THIS IS  
A TRUE AND CORRECT COPY OF THE  
ORIGINAL PLAT.  
*David W. Wells*

66-39



REGISTERED  
PROFESSIONAL  
LAND SURVEYOR  
*David W. Wells*  
OREGON  
DAVID W. WELLS  
0915  
10-1-89

PAGE 2 of 4  
2.658

LINE TABLE

LINE NO.	DESCRIPTION	DISTANCE
L1	S 65° 30' 42" W	34.32
L2	S 77° 30' 35" W	32.68
L3	S 47° 30' 55" W	29.35
L4	S 77° 30' 35" W	46.02
L5	S 77° 30' 35" W	36.00
L6	S 67° 12' 45" W	36.00
L7	S 67° 12' 45" W	40.00
L8	N 71° 20' 27" E	40.00
L9	N 09° 31' 18" E	18.48
L10	N 74° 35' 38" E	43.01
L11	N 74° 35' 38" E	20.30
L12	N 09° 31' 18" E	42.39
L13	N 09° 31' 18" E	30.35
L14	N 09° 31' 18" E	30.35
L15	N 47° 22' 30" E	23.41
L16	N 47° 22' 30" E	23.41
L17	N 47° 22' 30" E	14.09
L18	N 47° 22' 30" E	14.09
L19	N 47° 22' 30" E	32.73
L20	N 47° 22' 30" E	32.73
L21	N 47° 22' 30" E	32.73
L22	N 47° 22' 30" E	32.73
L23	N 47° 22' 30" E	32.73
L24	N 47° 22' 30" E	32.73
L25	N 47° 22' 30" E	32.73
L26	N 47° 22' 30" E	32.73
L27	N 47° 22' 30" E	32.73
L28	N 47° 22' 30" E	32.73
L29	N 47° 22' 30" E	32.73
L30	N 47° 22' 30" E	32.73
L31	N 47° 22' 30" E	32.73
L32	N 47° 22' 30" E	32.73
L33	N 47° 22' 30" E	32.73
L34	N 47° 22' 30" E	32.73
L35	N 47° 22' 30" E	32.73
L36	N 47° 22' 30" E	32.73

CURVE TABLE

LINE NO.	BEING	CHANGING	DISTANCE
1	100.00'	100.00'	100.00'
2	100.00'	100.00'	100.00'
3	100.00'	100.00'	100.00'
4	100.00'	100.00'	100.00'
5	100.00'	100.00'	100.00'
6	100.00'	100.00'	100.00'
7	100.00'	100.00'	100.00'
8	100.00'	100.00'	100.00'
9	100.00'	100.00'	100.00'
10	100.00'	100.00'	100.00'
11	100.00'	100.00'	100.00'
12	100.00'	100.00'	100.00'
13	100.00'	100.00'	100.00'
14	100.00'	100.00'	100.00'
15	100.00'	100.00'	100.00'
16	100.00'	100.00'	100.00'
17	100.00'	100.00'	100.00'
18	100.00'	100.00'	100.00'
19	100.00'	100.00'	100.00'
20	100.00'	100.00'	100.00'
21	100.00'	100.00'	100.00'
22	100.00'	100.00'	100.00'
23	100.00'	100.00'	100.00'
24	100.00'	100.00'	100.00'
25	100.00'	100.00'	100.00'
26	100.00'	100.00'	100.00'
27	100.00'	100.00'	100.00'
28	100.00'	100.00'	100.00'
29	100.00'	100.00'	100.00'
30	100.00'	100.00'	100.00'
31	100.00'	100.00'	100.00'
32	100.00'	100.00'	100.00'
33	100.00'	100.00'	100.00'
34	100.00'	100.00'	100.00'
35	100.00'	100.00'	100.00'
36	100.00'	100.00'	100.00'

HERE 1/4 CORNER  
SAC. 36, T. 2 S.,  
R. 1 E., N. 1/4 S.,  
PLAT 1000  
PLUSH

TO 5/0" IRON ROD  
1/4" H. B. HELLS CAP  
DEEP 8.3"

TO 5/0" IRON ROD  
1/4" H. B. HELLS CAP  
DEEP 8.3"

TO 5/0" IRON ROD  
1/4" H. B. HELLS CAP  
DEEP 8.3"

TO 5/0" IRON ROD  
1/4" H. B. HELLS CAP  
DEEP 8.3"

TO 5/0" IRON ROD  
1/4" H. B. HELLS CAP  
DEEP 8.3"

TO 5/0" IRON ROD  
1/4" H. B. HELLS CAP  
DEEP 8.3"

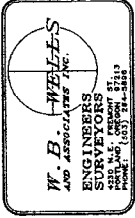
93/10

# BARRINGTON HEIGHTS

## PHASE IV

SITUATED IN THE WEST 1/2 OF SECTION 36, TOWNSHIP 2 SOUTH, RANGE 1 EAST OF THE WILLAMETTE MERIDIAN  
 COUNTY OF CLATSOP  
 STATE OF OREGON  
 MAY, 1989

SCALE 1" = 60'



I HEREBY CERTIFY THAT THIS IS  
 A TRUE AND EXACT COPY OF THE  
 ORIGINAL PLAT.  
*David W. Mills*

69-09

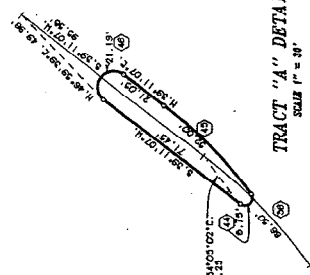
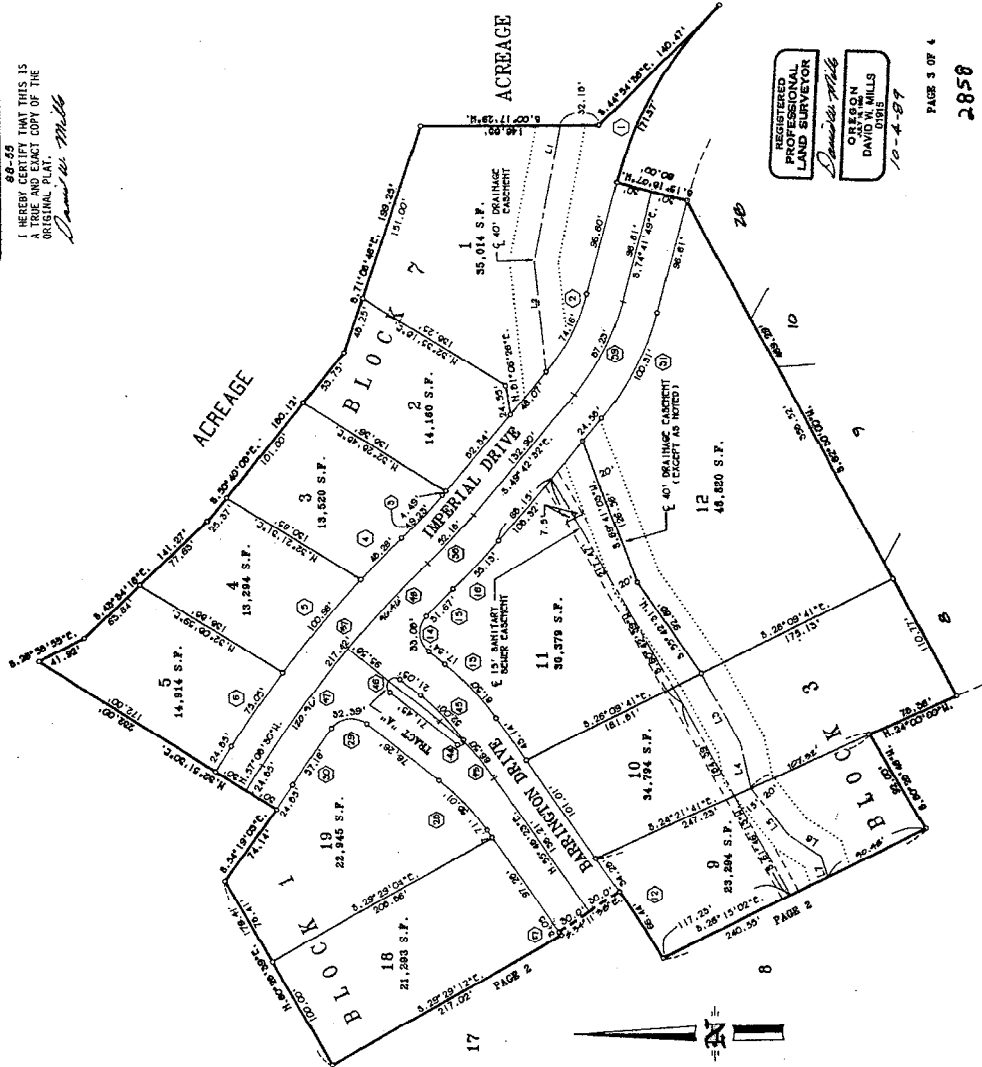
REGISTERED PROFESSIONAL  
 LAND SURVEYOR  
 DAVID W. MILLS  
 10-4-87

CURVE TABLE

#	CHORD	ANGLE	CHORD BEARING	DISTANCE	BEARING
1	100.00'	90.00°	N 00°00'00"E	100.00'	00°00'00"
2	150.00'	120.00°	N 30°00'00"E	150.00'	03°00'00"
3	200.00'	150.00°	N 60°00'00"E	200.00'	06°00'00"
4	250.00'	180.00°	N 90°00'00"E	250.00'	09°00'00"
5	300.00'	210.00°	N 120°00'00"E	300.00'	12°00'00"
6	350.00'	240.00°	N 150°00'00"E	350.00'	15°00'00"
7	400.00'	270.00°	N 180°00'00"E	400.00'	18°00'00"
8	450.00'	300.00°	N 210°00'00"E	450.00'	21°00'00"
9	500.00'	330.00°	N 240°00'00"E	500.00'	24°00'00"
10	550.00'	360.00°	N 270°00'00"E	550.00'	27°00'00"
11	600.00'	390.00°	N 300°00'00"E	600.00'	30°00'00"
12	650.00'	420.00°	N 330°00'00"E	650.00'	33°00'00"
13	700.00'	450.00°	N 360°00'00"E	700.00'	36°00'00"
14	750.00'	480.00°	N 390°00'00"E	750.00'	39°00'00"
15	800.00'	510.00°	N 420°00'00"E	800.00'	42°00'00"
16	850.00'	540.00°	N 450°00'00"E	850.00'	45°00'00"
17	900.00'	570.00°	N 480°00'00"E	900.00'	48°00'00"
18	950.00'	600.00°	N 510°00'00"E	950.00'	51°00'00"
19	1000.00'	630.00°	N 540°00'00"E	1000.00'	54°00'00"
20	1050.00'	660.00°	N 570°00'00"E	1050.00'	57°00'00"
21	1100.00'	690.00°	N 600°00'00"E	1100.00'	60°00'00"
22	1150.00'	720.00°	N 630°00'00"E	1150.00'	63°00'00"
23	1200.00'	750.00°	N 660°00'00"E	1200.00'	66°00'00"
24	1250.00'	780.00°	N 690°00'00"E	1250.00'	69°00'00"
25	1300.00'	810.00°	N 720°00'00"E	1300.00'	72°00'00"
26	1350.00'	840.00°	N 750°00'00"E	1350.00'	75°00'00"
27	1400.00'	870.00°	N 780°00'00"E	1400.00'	78°00'00"
28	1450.00'	900.00°	N 810°00'00"E	1450.00'	81°00'00"
29	1500.00'	930.00°	N 840°00'00"E	1500.00'	84°00'00"
30	1550.00'	960.00°	N 870°00'00"E	1550.00'	87°00'00"
31	1600.00'	990.00°	N 900°00'00"E	1600.00'	90°00'00"
32	1650.00'	1020.00°	N 930°00'00"E	1650.00'	93°00'00"
33	1700.00'	1050.00°	N 960°00'00"E	1700.00'	96°00'00"
34	1750.00'	1080.00°	N 990°00'00"E	1750.00'	99°00'00"
35	1800.00'	1110.00°	N 1020°00'00"E	1800.00'	102°00'00"
36	1850.00'	1140.00°	N 1050°00'00"E	1850.00'	105°00'00"
37	1900.00'	1170.00°	N 1080°00'00"E	1900.00'	108°00'00"
38	1950.00'	1200.00°	N 1110°00'00"E	1950.00'	111°00'00"
39	2000.00'	1230.00°	N 1140°00'00"E	2000.00'	114°00'00"
40	2050.00'	1260.00°	N 1170°00'00"E	2050.00'	117°00'00"
41	2100.00'	1290.00°	N 1200°00'00"E	2100.00'	120°00'00"
42	2150.00'	1320.00°	N 1230°00'00"E	2150.00'	123°00'00"
43	2200.00'	1350.00°	N 1260°00'00"E	2200.00'	126°00'00"
44	2250.00'	1380.00°	N 1290°00'00"E	2250.00'	129°00'00"
45	2300.00'	1410.00°	N 1320°00'00"E	2300.00'	132°00'00"
46	2350.00'	1440.00°	N 1350°00'00"E	2350.00'	135°00'00"
47	2400.00'	1470.00°	N 1380°00'00"E	2400.00'	138°00'00"
48	2450.00'	1500.00°	N 1410°00'00"E	2450.00'	141°00'00"
49	2500.00'	1530.00°	N 1440°00'00"E	2500.00'	144°00'00"
50	2550.00'	1560.00°	N 1470°00'00"E	2550.00'	147°00'00"

LINE TABLE

#	DEARLINE	DISTANCE
1	N 74°32'18"W	112.70'
2	S 64°30'00"W	82.21'
3	S 77°41'44"W	50.23'
4	S 23°31'20"W	31.00'
5	S 17°33'13"W	19.43'



TRACT "A" DETAIL  
 SCALE 1" = 30'

REGISTERED  
 PROFESSIONAL  
 LAND SURVEYOR  
*David W. Mills*  
 OREGON  
 DAVID W. MILLS  
 10-4-87

93 / 1

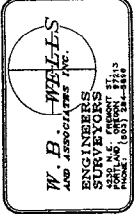
# BARRINGTON HEIGHTS PHASE IV

SITUATED IN THE WEST 1/2 OF SECTION 36, TOWNSHIP 2 SOUTH, RANGE 1 EAST OF THE WILLAMETTE MERIDIAN  
COUNTY OF CLATSOP

100-55

I hereby certify that this is a true and exact copy of the original.

David W. Mills



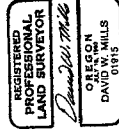
## SURVEYOR'S CERTIFICATE

I, DAVID W. MILLS, being first duly sworn, depose and say that I have viewed on the ground the surveyed lines of the above described plat and that the plat is a true and correct copy of the original. I have also viewed the original plat and the plat filed with the Register of Deeds and the plat is a true and correct copy of the original. I have also viewed the original plat and the plat filed with the Register of Deeds and the plat is a true and correct copy of the original. I have also viewed the original plat and the plat filed with the Register of Deeds and the plat is a true and correct copy of the original.

Containing 13.82 acres, more or less.

Subscribed and sworn before me  
This 13th day of November, 1989.

*Richard W. Johnson*  
Notary Public in and for the State of Oregon  
My commission expires December 11, 1991.



*David W. Mills*  
PROFESSIONAL  
LAND SURVEYOR  
OREGON  
DAVID W. MILLS  
01815  
By Commission Expires 11/11/91

## DEDICATION

KNOW ALL MEN BY THESE PRESENTS, that BARRINGTON DEVELOPMENT, INC., on this 8th day of November, 1989, has hereby made, established and declared the annexed plat of subdivision and plat thereof in Clatsop County, Oregon, and the plat is a true and correct copy of the original.

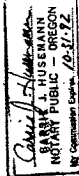
DATED this 8th day of November, 1989.  
BARRINGTON DEVELOPMENT, INC.  
By *Brian A. Brent*  
PRESIDENT

## ACKNOWLEDGEMENT

STATE OF OREGON  
COUNTY OF CLATSOP

BE IT REMEMBERED THAT on this 8th day of November, 1989, before me, the Notary Public in and for the State of Oregon, personally appeared *Brian A. Brent*, the President of Barrington Development, Inc., a corporation organized under the laws of the State of Oregon, and acknowledged to me that he is the President of Barrington Development, Inc., and that he has signed the foregoing plat of subdivision and plat thereof in Clatsop County, Oregon, and that he is the President of Barrington Development, Inc., and that he has signed the foregoing plat of subdivision and plat thereof in Clatsop County, Oregon.

Notary Public in and for the State of Oregon  
My Commission Expires 10-31-92  
*Richard W. Johnson*



## APPROVALS

Pursuant to O.S. 30.010, I hereby certify that all taxes have been paid for this tract. Approved this date, December 12, 1989. By *Raymond* Assessor & Tax Collector Deputy

*Annita C. Lewis*  
Deputy  
WEST LINN PLANNING COMMISSION  
CHAIRMAN

*Annita C. Lewis* 11/9/89 DATE  
WEST LINN CITY ADMINISTRATOR

*Annita C. Lewis* 12-15-89 DATE  
WEST LINN CITY CLERK  
DHAS & ASSOCIATES, INC.

*Annita C. Lewis* 12-15-89 DATE  
COUNTY COMMISSIONER  
COUNTY CLERK

*Annita C. Lewis* 12-15-89 DATE  
COUNTY COMMISSIONER  
COUNTY CLERK  
ATTORNEY  
COUNTY CLERK

*Annita C. Lewis* 12-15-89 DATE  
COUNTY COMMISSIONER  
COUNTY CLERK  
ATTORNEY  
COUNTY CLERK

*Annita C. Lewis* 12-15-89 DATE  
COUNTY COMMISSIONER  
COUNTY CLERK  
ATTORNEY  
COUNTY CLERK

*Annita C. Lewis* 12-15-89 DATE  
COUNTY COMMISSIONER  
COUNTY CLERK  
ATTORNEY  
COUNTY CLERK

*Annita C. Lewis* 12-15-89 DATE  
COUNTY COMMISSIONER  
COUNTY CLERK  
ATTORNEY  
COUNTY CLERK

PAGE 4 OF 4, 81  
2558