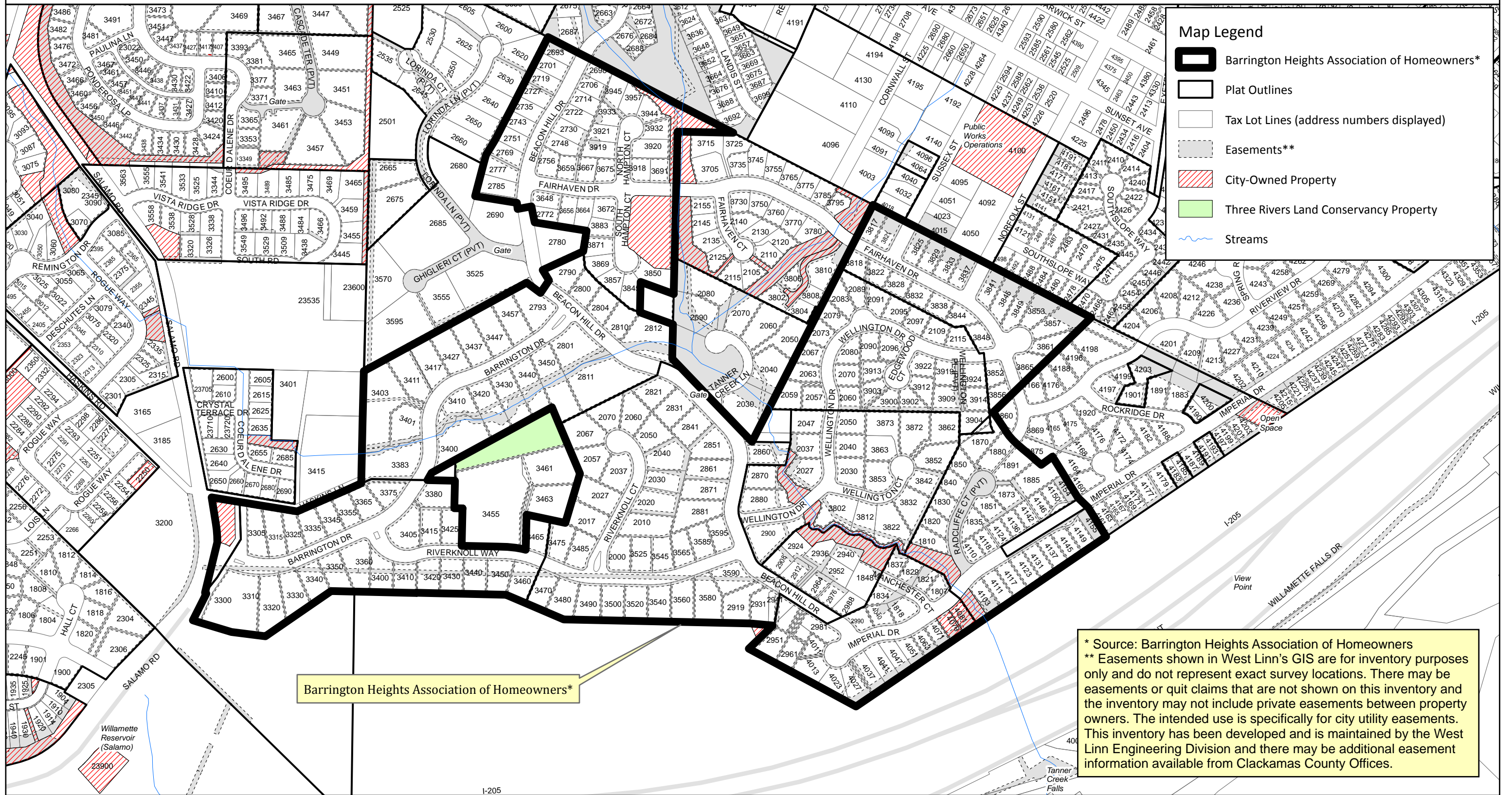




Barrington Heights Association of Homeowners

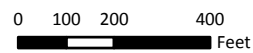
April 2010



Barrington Heights Association of Homeowners*

* Source: Barrington Heights Association of Homeowners
 ** Easements shown in West Linn's GIS are for inventory purposes only and do not represent exact survey locations. There may be easements or quit claims that are not shown on this inventory and the inventory may not include private easements between property owners. The intended use is specifically for city utility easements. This inventory has been developed and is maintained by the West Linn Engineering Division and there may be additional easement information available from Clackamas County Offices.

This product is for informational purposes and may not have been prepared for, or be suitable for legal, engineering, or surveying purposes. Users of this information should review or consult the primary data and information sources to ascertain the usability of the information.
 Taxlot Base Source: Metro RLIS



NEIGHBORHOOD\BHT\BHT_PROPERTIES_2010_APRIL.MXD | AHA | 4-30-2010

